

A modern residential complex with a swimming pool and palm trees. The image shows a large, multi-story building with a curved facade and a swimming pool in the foreground. The pool is surrounded by lounge chairs and a fence. The background features several palm trees and a clear sky. The overall scene is bright and sunny, suggesting a warm climate.

RODA RESIDENCES

RODA | REAL ESTATE



Located on a south-facing plot inside the prestigious Roda Golf & Beach Resort, bordering the course with its manicured fairways and feature lakes, this beautiful complex comprises 37 spacious homes surrounding a stunning pool and communal gardens.

All properties boast 3 bedrooms and 2 bathrooms, plus off-road parking and a private storeroom.

Exclusive living inside the prestigious Roda Golf & Beach Resort



5 minutes from the beach
20 minutes from Murcia international Airport
less than 1 hour from Alicante International Airport



The resort

A private resort with 24 hour security, its own taxi rank, a stunning club house with a la carte restaurant, gym with lake views and sports area. And all this just a stroll or cycle ride away from the beaches and tranquil waters of the Mar Menor inland lagoon.

The golf

A beautifully maintained, Dave Thomas designed 18 hole course with lakes, strategically placed bunkers, undulating greens and lush Mediterranean vegetation.

The beach

Roda Residences has a fantastic selection of golden sandy beaches on its doorstep, as well as a wide range of watersports. Enjoy both the Mar Menor and the Mediterranean seas from this paradise on the Murcian coastline.

Roda Residences offers a range of property types, views and orientations, according to your requirements.

All bungalow apartments boast 3 double bedrooms, 2 bathrooms, a light and spacious open-plan living-dining room with American kitchen and fantastic outside space. All include off-road parking and a private storeroom.

Roda Residences offers a range of property types, views and orientations





The 18 ground floor homes enjoy an interior terrace and garden which lead out to the communal gardens and pool area, as well as a large, gated rear terrace and garden.

The 18 penthouses include a front balcony off the living room, as well as a fantastic, 90m² private roof solarium with summer kitchen.

Ground floor
homes and
penthouses

A south-facing, corner duplex with 3 bedrooms, 2 bathrooms, garden and solarium rounds off the development.

Featuring a modern design whilst at the same time maintaining a traditional Spanish feel in natural surroundings, Roda Residences has been designed to maximise the use of space and light. Superbly built and including a wide range of extras, this exclusive promotion is a real oasis on Spain's Costa Calida.

Modern
design, maintaining a
traditional Spanish feel





At the heart of the development lies a stunning communal pool area, surrounded by Mediterranean vegetation. Enjoying sun all day long thanks to its south facing orientation, it is the perfect place to swim, relax and soak up the Murcian sunshine.

Stunning communal pool area, surrounded by Mediterranean vegetation



As well as enjoying fantastic inside space, the ground floor properties boast a beautiful front terrace plus additional, private garden that leads out into the interior of the development with its stunning communal gardens and pool area.

Ground floor homes

In addition, they offer a back terrace and enclosed garden for maximum privacy, with a gate that leads out to the exterior of the urbanization. The dual orientation ensures that the homes enjoy sun and shade all day long.



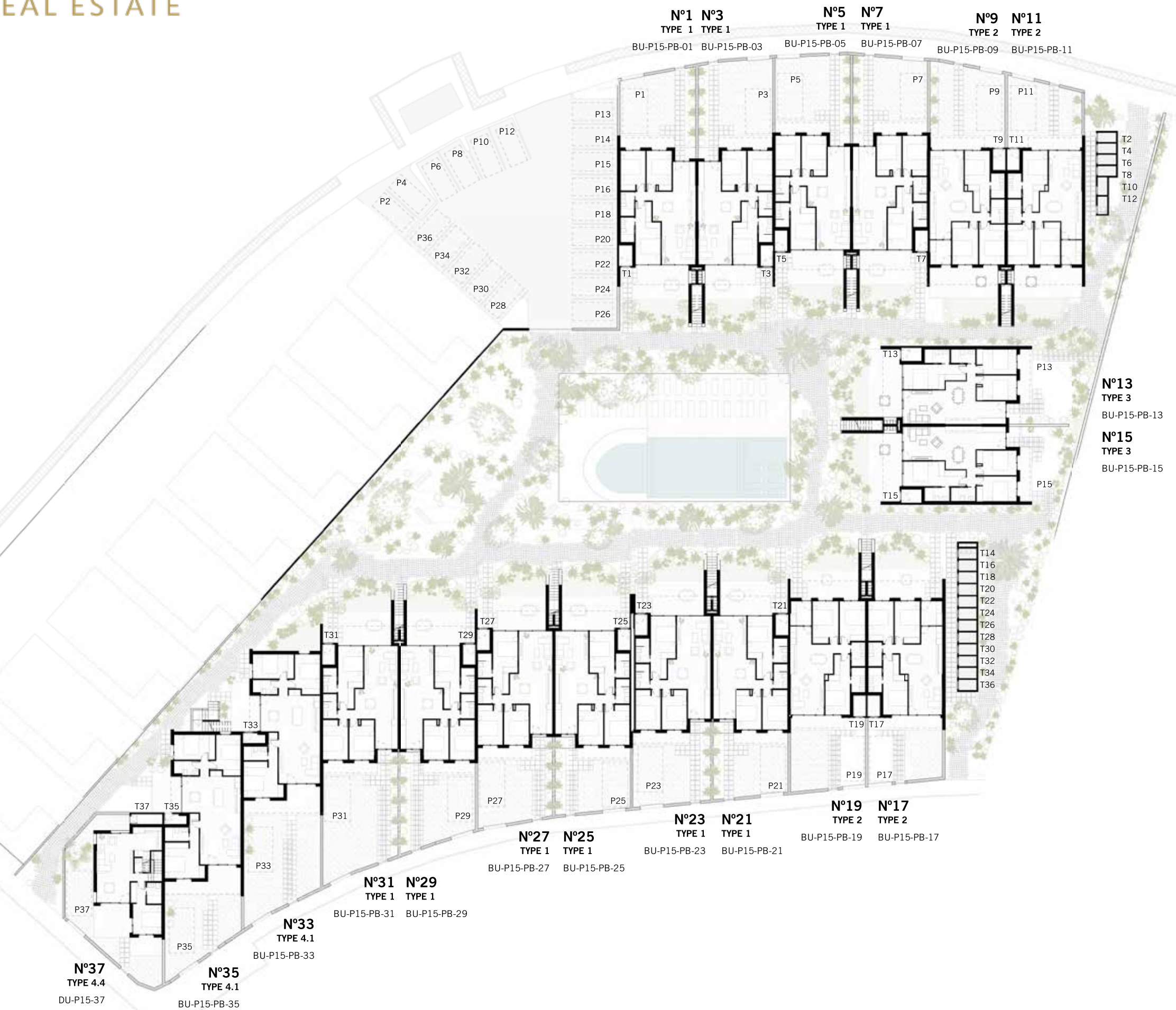
Our top floor homes also offer spacious 3 bedroom and 2 bathroom accommodation, plus a panoramic balcony off the living room which offers lovely views either of the communal areas or the resort.

The penthouses



The impressive, 90m2 private roof solarium with summer kitchen is the perfect location to take in the spectacular views, enjoy the winter sun and dine al fresco on a balmy summer night.

GROUND FLOOR HOMES
Ground floor
Scale 1:400

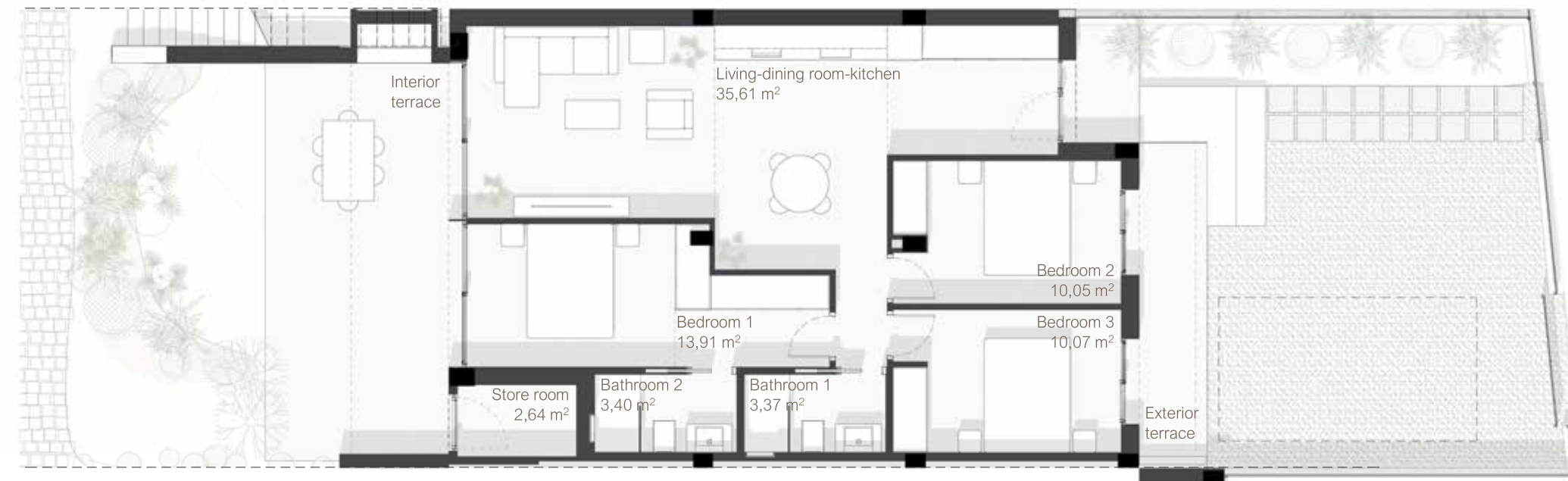


PENTHOUSES
Upper floor
Scale 1:400

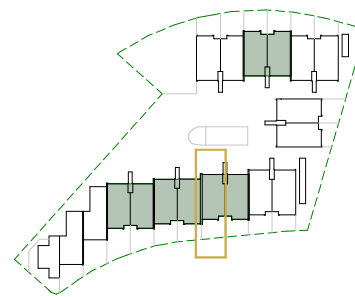


Bungalow TYPE 1 Ground floor N°23

Constructed Area	
House	87,25 m ²
Store room	3,55 m ²
Total house	90,80 m²
Interior terrace	22,72 m ²
Interior garden	24,16 m ²
Exterior terrace	12,75 m ²
Exterior garden	46,58 m ²
Total outdoor	106,22 m²
Total house+outdoor	197,02 m²
Plot	193,46 m ²



Ground floor



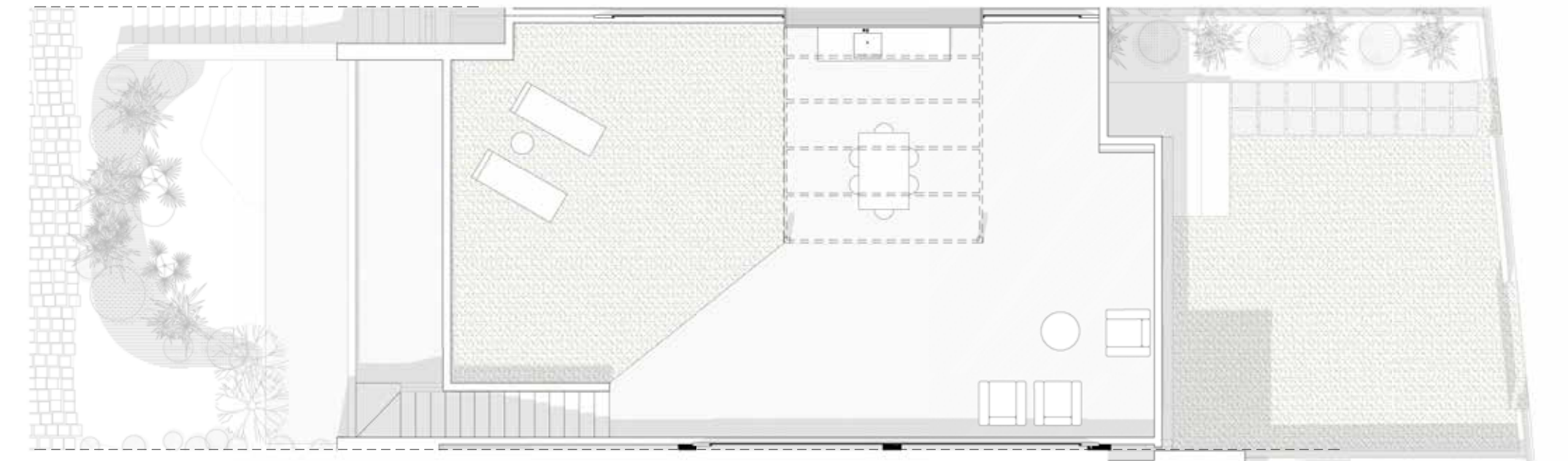
BUNGALOW TYPE 1

Ground floor

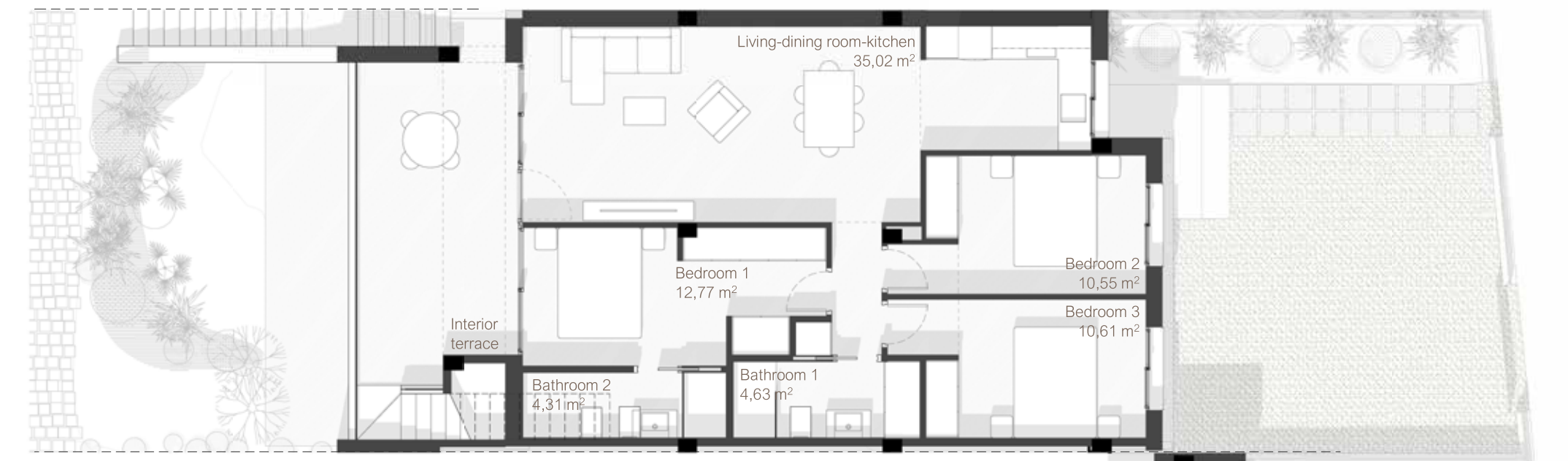


Bungalow TYPE 5 Upper floor N°24

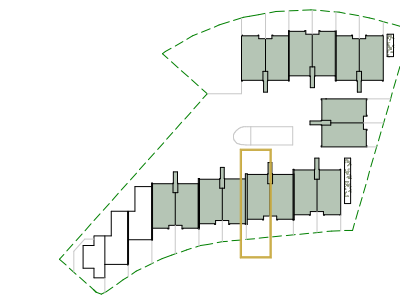
Constructed Area	
House	90,05 m ²
Store room	2,52 m ²
Total house	92,57 m²
Interior terrace	20,12 m ²
Solarium	95,35 m ²
Total outdoor	115,47 m²
Total house+outdoor	208,04 m²
Plot	110,17 m ²



Solarium



Upper floor



BUNGALOW TYPE 5

Upper floor



RODA RESIDENCES

RODA | REAL ESTATE

Partner: **UNO100**
Imagina, nosotros diseñamos.

This information is not contractual and is merely indicative, and may be subject to technical modifications derived from the development of the Building Project and its execution. The furnishings shown are indicative only, furniture and decorative elements are not included in the price. Only the elements included in the quality specifications of the approved project are included.